

Guidance on Victim Support System

To reduce burden on victims during investigation

- Investigation under the consideration of privacy
- Improvement of consulting rooms for victim support

Victim Notification System

- Notification on progress of investigation, arrest of criminal, result of punishment, etc.
- Visits to crime victims by community police officers.

Victim Support Service by Staff

- Accompaniment during hospital exam, police investigation, pickup, etc.
- Counselling for anxieties
- Explanation of criminal proceedings

Financial assistance

- Emergency contraception fees
- Cost of initial consultation, etc.
- Fee of temporary evacuation shelter

Victim counseling system

- Mental healthcare by clinical psychologists, etc.
- Mental healthcare by internal counselor
- Assistance for counseling cost

Network with related authorities and organizations

- Cooperation with relevant organizations and entities
- Support of NGO for crime victims

Others

- Information service and providing consultation on the website
- Revictimization prevention and protection measures

Victims support during trials

- Victim participation program
- Court-appointed lawyer system for victims
- System of order of compensation for damages



※Please contact the Public Prosecutors Office or court for more information.

Police Consultation Services



Either male or female police officers are available at your request.

Sexual Victimization Helpline

- (1) Toll-free number #8103
or 0120-282-1114
- (2) Another Phone Number 089-934-0114

Phone Number Dedicated for Police Consultation Service

#9110 or 089-931-9110

Headquarters

(Investigation Guidance Unit on Sexual Offences) Ex.4133
(Victims Support Desk on Sexual Offences) Ex.2192/2193

Police stations

Shikokuchuo	Criminal investigation section	0896-24-0110
Niihama	Criminal investigation section	0897-35-0110
Saijo	Criminal investigation section	0897-56-0110
Saijo West	Criminal investigation section	0898-64-0110
Imabari	Criminal investigation section	0898-34-0110
Hakata	Criminal investigation and Community Safety Section	0897-72-0110
Matsuyama East	1st criminal investigation section	089-943-0110
Matsuyama West	Criminal investigation section	089-952-0110
Matsuyama South	Criminal investigation section	089-958-0110
Kumakogen	Criminal investigation and Community Safety Section	0892-21-0110
Iyo	Criminal investigation section	089-982-0110
Ozu	Criminal investigation section	0893-25-1111
Yawatahama	Criminal investigation section	0894-22-0110
Seiyo	Criminal investigation section	0894-62-0110
Uwajima	Criminal investigation section	0895-22-0110
Ainan	Criminal investigation and Community Safety Section	0895-72-0110

※ Female police officers are occasionally not available due to their workshift or other reasons

Other Consultation Services

- HIMEKOKO Ehime Sexual Violence Counseling and Support Center 089-909-8851
(Telephone consultation is available 24 hours a day, 365 days a year)
- Ehime Prefecture Welfare Integrated Support Center 089-927-3490
(Weekday 8:30~17:15 / Evenings including Saturdays and Sundays 18:00~20:00 / Closed on national and New Year holidays)
- Ehime Prefecture Gender Equality Center 089-926-1644
(Tuesday to Friday 8:30~17:30 / Saturdays and Sundays 8:30~16:30 / Closed on Mondays and national holidays)
- Public Interest Incorporated Association "Victim Support Center Ehime"
(Tuesday to Saturday 10:00~16:00) 089-905-0150
- Japan Legal Support Center (Crime victims support telephone number)
(Weekdays 9:00~21:00, Saturdays 9:00~17:00 except public holidays and the Year-End/New Year holidays)
0570-079714
(For IP telephones) 03-6745-5601

For Crime Victims

You cannot use the toll-free number by some IP telephone, etc.



You are not alone.
You are an important person.

Being a victim of a crime, anyone can have a difficulty to know what to do or what happened to him or her. That will make you suffer from various symptoms physically and mentally. This leaflet introduces the investigational proceedings, the support system, mental and physical trauma, and consultation services.

We hope we can be any help to you.

Ehime Prefectural Police

(PC)

<https://www.police.pref.ehime.jp/>

(smartphone)

<https://www.police.pref.ehime.jp/mobile/s/index.htm>

i-mode, EZweb

Yahoo! Mobile (softbank)



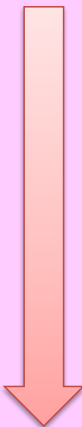
Criminal Proceedings

We realize that our request for victims' cooperation during the course of criminal proceedings may become a burden on a victim.

Victims may not hope to remember what happened and interviews could be trying experiences for them, but the cooperation is important to arrest and punish criminals.

Police

(investigation)



Public prosecutor

(Indictment or No indictment)

Court

(Trial)



○ Interview · Making documents

Police may ask a victim about the circumstances of a crime and a suspect. Then a police officer makes a record of the victim's statement and asks him or her to sign and affix a seal after reading through the record to see whether it is correct.

○ Medical Examination

In the case of injury, at risk of pregnancy or sexually transmitted disease, please take the medical examination immediately. At that time, victims may be accompanied by a police officer.

○ Evidence Submission

Victims may be asked to submit evidence leading to arrest criminals such as criminal's body fluids or clothes which victims were wearing at the time of the case. Police returns the items without samples collected at the scene as quickly as possible when the items become unnecessary to store.

※ Please keep the clothes or other items without laundering them.
when victims are injured, police officers will take photos for preservation of evidence and may ask victims to submit the medical certificate.

○ On-The-Spot Investigation

Victims may be asked to revisit the crime scene with police officers to confirm the place and the circumstances. In Crime -scene Reconstruction, we use a mannequin doll

○ Interview

The prosecutor may ask the same questions as police did.
※ The prosecutor in charge will question the victim after reading reports made by the police in advance

○ Testimony · Statement of Opinion

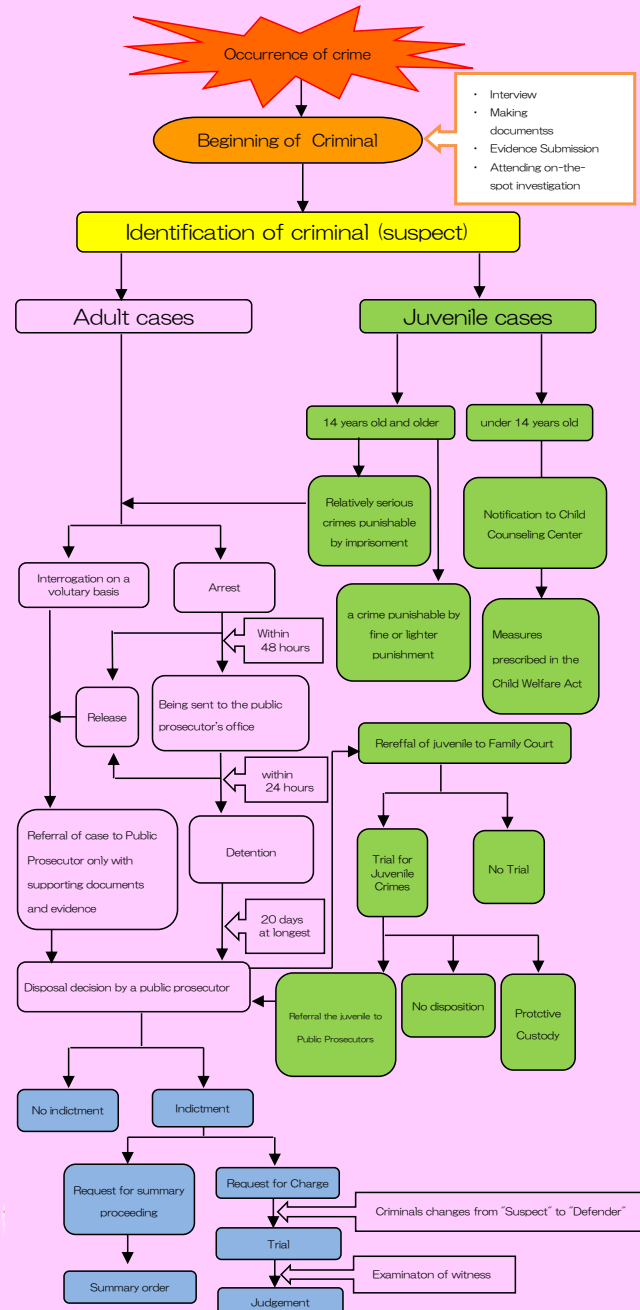
We try to ease victim's mental burden. For instance, a video link can be set up so a victim or witness can testify in a different room. Also they can make statements behind screen. Then the victims don't need to face the criminals. A counselor or other attendants may be provided for victims. Please consult us if you need.

Apart from testimonies, victims can appeal directly to judges or suspects about how much they were suffered.

○ Attendance in court

Supporters of Public Prosecutor's Office or NGO can be in attendance on victims in trials. So please consult us if you hope.
※ For reference, victims do not always attend courts.

Criminal Procedure Chart



If you become a victim of sexual crime

Question: Who should I contact or consult with?

Answer: First, please consult with police. The police will listen to your circumstances on the crime and decide what to do together. Please be reassured that we keep your privacy such as the situation of the crime and your personal affairs. Generally both male and female police officers are available at your request.

Question: Do I have to answer questions that I don't want to be asked?

Answer: Concerning the crime, an investigator might ask you some questions which are hard for you to answer. However, to investigate crimes, police have some matters to check. So we'd appreciate if you cooperate as much as you can.

Question: When the suspect is under arrest, will the police contact me?

Answer: Police certainly inform you of not only the arrest of the suspect, but also information on the progress of the investigation and the criminal proceeding after the arrest. If you have any question, police officers readily consult about it. So do not worry to contact us.

Question: What should I do when I cannot sleep well at night or I am disturbed by anxiety.

Answer: Many victims of sexual crimes sometimes get devastated, scared or saddened. Also, they tend to blame themselves and be overwhelmed. Please don't tale it all on yourself alone. It is important to consult someone you trust, such as medical institutions or counselors.



On the Ehime Prefectural Police website, we publish some information such as questions on sexual crimes, guidance regarding the victim support system, consulting desk and so on.