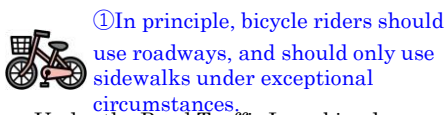


Bicycle Riding Rules



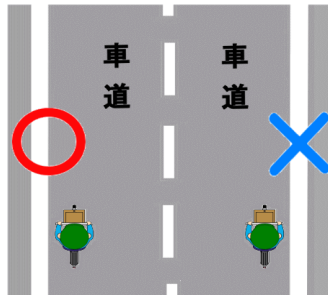
① In principle, bicycle riders should use roadways, and should only use sidewalks under exceptional circumstances.

Under the Road Traffic Law, bicycles are categorized as mini-vehicles. In principle, bicycle riders should use roadways where sidewalks and roadways are separated.

【Penalty】 Imprisonment for up to three months or a fine of up to 50,000 yen



② On roadways, bicycle riders should keep to the left side.



Bicycle riders should keep to the left side of the road.

【Penalty】 Imprisonment for up to three months or a fine of up to 50,000 yen



③ On sidewalks, bicycle riders should yield to pedestrians and go slowly.

On sidewalks, bicycle riders should go slowly so that they can stop immediately. They should stop when their riding may block a pedestrian.

【Penalty】 A fine of up to 20,000 yen or pecuniary penalty



※ Limited to normal bicycle



④ Bicycle riders should observe safety

■ Bicycle riders must keep their

■ Riding double on a bicycle is

■ Riding side by side on bicycles is

Except when giving a signal, riding a bicycle with one hand is prohibited.



【Penalty】 Imprisonment for up to three months or a fine of up to 50,000 yen

■ Bicycle riders should have lights

(During safety campaigns, bicycle riders should have headlights on during the daytime.)

Bicycle riders should have headlights and rearlights (or reflectors) on during evening hours.



【Penalty】 A fine of up to 50,000 yen

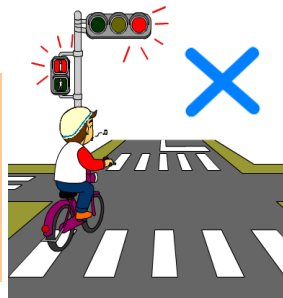
Except when riding a bicycle with a child under six years old, riding double on a bicycle is prohibited.



【Penalty】 A fine of up to 20,000 yen or pecuniary penalty

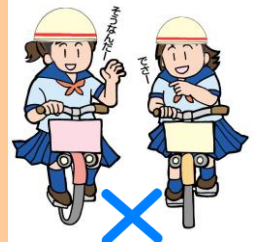
■ Bicycle riders should comply with traffic

Bicycle riders must comply with traffic lights for pedestrians.



【Penalty】 Imprisonment for up to three months or a fine of up to 50,000 yen

Riding side by side on bicycles is prohibited, except for areas with road signs indicating "riding side by side is permitted."



【Penalty】 A fine of up to 20,000 yen or pecuniary penalty

■ Bicycle riders should stop and check for

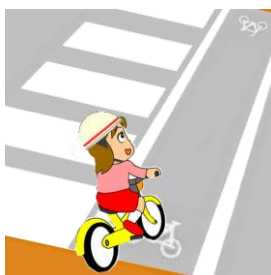
Bicycle riders should obey stop signs, and slow down before entering a wider road from a narrow road, while checking for safety.



【Penalty】 Imprisonment for up to three months or a fine of up to 50,000 yen

■ Use the bicycle crossing when it's

Bicycle riders should use bicycle crossings when it's indicated.



【Penalty】 A fine of up to 20,000 yen or pecuniary penalty. In case of not following the instruction of a police officer

Bicycle riders should not talk on or operate a mobile phone or use an umbrella while riding.



Bicycle riders are prohibited from operating or talking on a mobile phone or looking at the screen while riding.

【Penalty】 A fine of not more than 50,000 yen



Bicycle riders should not use an umbrella while riding.

【Penalty】 A fine of not more than 50,000 yen