

The Guidance for Crime Victims

- ◎ Systems Available for Crime Victims from **Police**
- Victim Information System (Provision of information concerning progress of investigation, etc)
 - Assistance by support staffs (accompanying to a hospital, etc)
 - Financial Assistance (Financial assistance for emergency contraceptive, etc)
 - Counseling for Victims (psychological care by experts)
 - Prevention of further crimes/ Protection measures, etc.

- ◎ Systems Available for Crime Victims from **Prosecutors Office/ Courthouse**

- Victims of Crime Notification System, etc
- Victim Participation System
- Court-Appointed Attorney System for Victims
- An order of compensation of damages System



We introduce appropriate systems to you as needed, please feel free to contact us.

Impact on Mind and Body

Victims tend to be affected on body and mind, so you would feel symptoms outlined below.

It is not unusual effect, but it could happen for everyone because of significant impact.

Appearance of impact on mind and body is different depending on independence. It could be different by passage of time and environment changes.

About myself

- Assuming myself that was my fault
- Coming to have terrible mood swings
- Always anxious and restless, cannot sleep at night

About an incident

- Not clearly remembering an incident
- Frequently remembering an incident and cannot get off mind
- Feeling an incident as somebody else's business, etc

About somebody else's business

- Being afraid of someone resembling an offender and others
- Feeling nobody understands you
- Don't want to interact with others, etc



Contact Information



You can choose the gender of police officer who deals with your problem



Sexual Victimization Helpline

- (1) Toll-free number
#8103
OR 0120-282-114
- (2) Another phone number
089-934-0114

You cannot use the toll-free number by some IP telephone, etc.

Phone Number Dedicated for Police Consultation Service

#9110 OR 089-931-9110

Police Stations

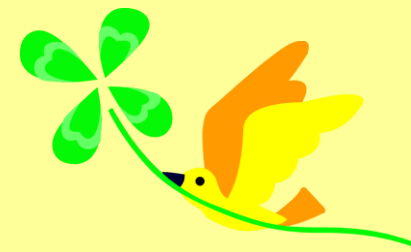
Shikoku-chuo	Criminal investigation section	0896-24-0110
Nihama	Criminal investigation section	0897-35-0110
Saijo	Criminal investigation section	0897-56-0110
Saijo-Nishi	Criminal investigation section	0898-64-0110
Imabari	Criminal investigation section	0898-34-0110
Hakata	※1	0897-72-0110
Matsuyama-Higashi	Criminal investigation section	089-943-0110
Matsuyama-Nishi	Criminal investigation section	089-952-0110
Matsuyama-Minami	Criminal investigation section	089-958-0110
Kumakougen	※2	0892-21-0110
Iyo	Criminal investigation section	089-982-0110
Ozu	Criminal investigation section	0893-25-1111
Yawatahama	Criminal investigation section	0894-22-0110
Seiyo	Criminal investigation section	0894-62-0110
Uwajima	Criminal investigation section	0895-22-0110
Ainan	※3	0895-72-0110

※1~3 : Criminal investigation and Community safety section

Other Consultation Services

- **HIMEKOKO** ~Ehime Sexual Violence Counseling and Support Center~
(Telephone consultation is available 24 hours a day, 365 days a year) #8891
- **Ehime Prefecture Welfare Integrated Support Center**
(Weekday 8:30~17:15 / Evenings including Saturdays and Sundays 18:00~20:00 / Closed on national and New Year holidays) 089-927-3490
- **Ehime Prefecture Gender Equality Center**
(Tuesday to Friday 8:30~17:30 / Saturdays and Sundays 8:30~16:30 / Closed on Mondays and national holidays) 089-926-1644
- **Public Interest Incorporated Association 「Victim Support Center Ehime」**
(Monday to Friday 10:00~16:00) 089-905-0150
- **Japan Legal Support Center** (Crime victims support telephone number)
Weekdays 9:00~21:00, Saturdays 9:00~17:00 except public holidays and the Year-End/New Year holidays
0120-079714 (For IP telephone) 03-6745-5601

To those seeking consultation



You are not alone
You are a valued person

Until coming to consultation, anyone can have a difficulty to know what to do or what happened to him or her. That will make you suffer from various symptoms physically and mentally.

This leaflet introduces the investigational proceedings, the support system, mental and physical trauma, and consultation services.

We hope we can be any help to you.

Person in charge

Ehime Pref.

Police Station

Section

Name

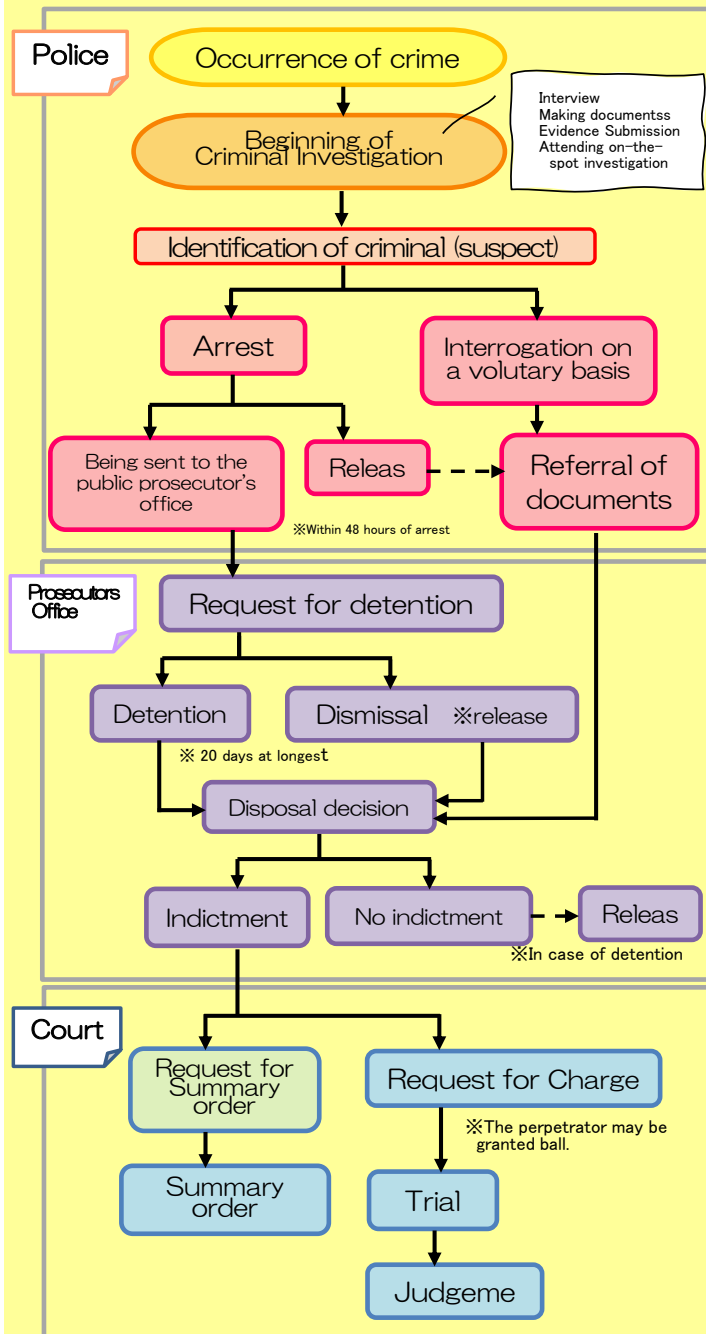
Telephone

Extension

Ehime Prefectural Police

As of April, 2025

Criminal Procedure Chart



※ Summary order: To decide the punishment of the perpetrator through a written hearing.



Cooperation regarding investigations



In criminal procedure, we will ask you to do various things. They may make you feel burdened. There may be things you don't want to remember and that are painful for you. These are significant things to ensure that perpetrators are arrested, severely punished. We ask for your understanding and cooperation in the investigation.

1 Cooperation with the Police

○ Medical Examination

In case of injury, at the risk of pregnancy or sexually transmitted diseases, please take the medical examination. Sexually transmitted diseases often have no noticeable symptoms, so you don't even know if you are infected. Therefore, early detention and treatment are important. If you have been affected within 72 hours, you have a high chance of preventing pregnancy by taking emergency contraception prescribed by a doctor.

In case of taking medical examination, you may be accompanied by Police officer.

○ Submission of Evidence

Evidence that lead to the perpetrator is often left your body or clothing. Therefore, doctors and police officers may take evidence from body, such as bodily fluids or urine.

In addition, you may be asked to submit evidence leading to arrest criminals such as criminal's body fluids or clothes which victims were wearing at the time of the case.

Police returns the items without samples collected at the scene as quickly as possible when the items become unnecessary to store.

※ To help us find the perpetrator, we may ask you to submit clothing or other items. We also collect urine samples to check whether the perpetrator have secretly given you drugs.

○ Interview Making documents

There are some things you don't want to remember, but we are asking you because it is necessary to clarify the case. We kindly ask for your understanding.

Then a police officer makes a record of your statement and asks you to sign and affix a seal after reading through the record to see whether it is correct.

○ On-The-Spot Investigation

Victims may be asked to revisit the crime scene with police officers to confirm the place and the circumstances. In Crime - scene Reconstruction, we use a dummy doll or police officer to ease the burden on victims.

※ We take care to prevent you from recreating the situation that caused you harm.

2 Cooperation with the Prosecutors Office (Cooperation after referral)

○ Interview

The prosecutor may ask the same questions as police did.

In addition, they may make documents based on you said.

※ The prosecutor in charge will question the victim after reading reports made by the police in advance.

3 Cooperation with the Court (Cooperation after indictment)

○ Testimony - Statement of Opinion

We try to ease victim's mental burden.

For instance, a video link can be set up so a perpetrator witness can testify in a different room.

Also they can make statements behind screen.

Then the victims don't need to face a perpetrator.

A counselor or other attendants may be provided for victims. Please consult us if you need.

Apart from testimonies, victims can appeal directly to judges or a perpetrator about how much they were suffered.

○ Attendance in court

Supporters of Public Prosecutor's Office or NGO can be in attendance on victims in trials.

So please consult us if you hope.

Q&A

Q: Will the perpetrator ever come out after being arrested?

A: There are two cases. The one is "release" in case of no indictment, the another one is "bail" after indictment. In these cases, police will contact you in advance.

Q: I am terrified that the perpetrator might see some documents with my name and a number of photos with my face.

A: We will make documents with your name and address on them as the minimum required quantities. In addition, when taking photos, we will pay attention not to capture your face and so on.